

A large, mature tree with dense foliage in shades of orange, red, and brown dominates the right side of the frame. The ground is covered in a thick layer of fallen leaves in similar colors. In the background, a green lawn stretches out, with a small utility vehicle or tractor visible near the base of the tree. The sky is blue with scattered white clouds. The overall scene is a peaceful autumn landscape.

West End Parish Council News

February 2023

Your Community

A Warm Welcome Awaits You at Your Local Cafe in the Community

Delicious, freshly prepared cakes, sandwiches, paninis, soup, tea, coffee & more!

The Hatch Cafe is based in the Parish Centre.

Available for indoor and outside table service as well as takeaway.

Please call 07582 990 363 for any bookings or enquiries.

EAT, DRINK, RELAX, ENJOY



Opening Times

Monday	9am to 4pm
Tuesday	9am to 5pm (T/T) 9am to 4pm (S/H)
Wednesday	9am to 4pm
Thursday	9am to 4pm
Friday	9am to 5pm
Saturday	9am to 1.30pm
Sunday	CLOSED

T/T Term Time S/H School Holiday

Afternoon Tea

Come and join us for a Traditional Afternoon Tea.



£14.95

Per Person



Tables are available Monday - Friday between 2pm - 4 pm

Bookings need to be made 48 hours in advance.

PROGRAMME OF SPEAKERS 2023

Meetings are held at West End Parish Centre and start at 7.30pm

Visitors Welcome (£2.00 per meeting)

For Further Details Contact Nigel Wood or Lin Dowdell

02380 471886

VISIT OUR WEBSITE AT: www.westendlhs.co.uk



1st February

"The East India Company at Home"
Dr Cheryl Butler

1st March

"Napoleonic Prisoner of War Work"
Tony Cross

5th April

Annual General Meeting plus "Building Spitfires without a Factory"
Alan Matlock

3rd May

"Winchester Prison Past & Present"
Mark Watts



St James' Church West End

Come and see for yourself

Community Coffee Morning on the second Friday of the month from 10.30am to 12 noon in St James Church Hall, Church Hill, SO30 3AT. All welcome.

Warm Welcome Space - Thursdays 10am to 1pm until 23rd March in the church hall. This is a warm and welcoming place for everyone to connect with others, take part in activities or just be, without switching on the heating at home. Everyone is welcome. There are free drinks and biscuits, and a free cup-a-soup and roll at lunchtime. Games and activities are available. There are toys for little ones. This space is sponsored by West End Parish Council. Please let friends and neighbours know about this project & anyone who might like to come along & here is the link to find other warm welcome spaces. [Find a Warm Welcome Space Today](#) Transport is available if needed. Please contact West End Parish Council for more information.

Stay and Play for preschoolers and their parents and carers - Wednesdays 9.15am to 10.20am at St James Church Hall, fun, play and a story. £1.50 per family which includes a snack.

The church is open for anyone to visit from 9am to 3pm Tuesdays to Fridays. www.stjameswestend.org.uk

Holiday Cottage

Highampton, Devon (between Bude and Okehampton)

- Peaceful location • Sleeps up to 4 (double bed + Futon in living room)
 - Dishwasher • Bedding and laundry supplied • Wi-Fi •
- Indoor heated swimming pool • Children's play area and BBQ
 - Landscaped grounds with stunning views of Dartmoor
 - Private fishing lake •
- Short stay or longer lets (pets welcome by agreement) •



£70 per night Discounts for 7 nights or more



Please contact Patrick Whitbourn
07507 681805
patrick.whitbourn@ntlworld.com
www.lakeviewindevon.co.uk

Your Parish Council



The Blue Lamp Trust helps protect vulnerable residents in Hampshire and the Isle of Wight from becoming victims of crime - as part of their crime prevention advisory service.

The scheme from the Blue Lamp Trust offers **FREE** home visits providing both general and specific crime and fire prevention advice to improve home safety.

They visit residents of Hampshire and the Isle of Wight who are:

- | | |
|--|---|
| <ul style="list-style-type: none">· Vulnerable due to age (over 65)· Disabled· A victim of crime | <ul style="list-style-type: none">· A victim of burglary· A victim of domestic abuse |
|--|---|

Their trained, police vetted, Bobby Scheme Fitters will visit and carry out a full survey and, as appropriate fit items free of charge, such as:

- | | |
|---|---|
| <ul style="list-style-type: none">· Locks· Spy Holes· Door Chains | <ul style="list-style-type: none">· Smoke Alarms· Carbon Monoxide Alarms |
|---|---|

Installing Key Safes

They can also supply and fit Supra C500 Key Safes. These are ACPO Police Accredited and have a 5-year guarantee. Cost £75.

All of the Blue Lamp Trust advisors are police vetted and carry ID cards to reassure local residents that they are genuine – and please remember, they will not be offended if you ask to see their ID to validate their identity.

Referrals

If you, or anybody you know, is eligible (based on the criteria above) and would benefit from a Bobby Scheme referral, please enquire via the Blue Lamp Trust website at <https://www.bluelamptrust.org.uk/bobby-scheme-choice/>.

Newsletter Mailing List

To subscribe to receiving our newsletter by email for future editions, please visit the homepage of our website, www.westend-pc.gov.uk where there will be a sign up function.



YOUR LOCAL NEIGHBOURHOOD POLICING TEAM

PC Emma Roberts and PCSO Mica Woodcock.

PC Emma Roberts generally deals with neighbourhood crime matters and PCSO Mica Woodcock focuses on antisocial behaviour (ASB) and low level crime She also deals with a wide variety of neighbourhood matters whilst on patrol.

If you would like to speak to one of us relating to a general enquiry – please email eastleigh.police@hampshire.pnn.police.uk and write whose attention the email is for.

PLEASE BE AWARE – we cannot take reports of incidents via email. ALL REPORTS MUST be made either through **101** or online at www.hampshire.police.uk

HAMPSHIRE ALERT – Receive FREE crime and community information about where you live.

Hampshire Alert covers the whole of Hampshire, please tell your neighbours, friends and family, so we can reach as many residents as possible. Hampshire Alert is NOT social media, the 'alert' comes through email. We can choose to send a message to the whole of West End, or we can target certain roads – this helps us to reach the specific residents who may have been affected by crime or community matters.

REGISTER NOW - <https://www.hampshirealert.co.uk>



Are you on Facebook or Twitter?

Please follow us @HedgeEndPolice



COMMUNITY SPEEDWATCH

We need volunteers—Can you spare 2 hours a month? If you would like to join this amazing team please email - speedwatch@hampshire.pnn.police.uk

Your Parish Council

West End Councillors 2022/23

Chair of the Council - Cllr Carol Boulton

Vice Chair of the Council - Cllr Sarah Turl

Allington Ward

Cllr Goguel
023 8178 8847
john.goguel@westend-pc.gov.uk

Cllr Gomer
07568 797 494
richard.gomer@westend-pc.gov.uk

Chartwell Ward

Cllr Asman
07982 459 149
janice.asman@westend-pc.gov.uk

Cllr Boulton
023 8047 3693
carol.boulton@westend-pc.gov.uk

Cllr Willoughby
07730 575 091
stephen.willoughby@westend-pc.gov.uk

Hatch Grange Ward

Cllr Tennent
07703 447 365
bruce.tennent@westend-pc.gov.uk

Cllr Du-Crow
barry.ducrow@westend-pc.gov.uk

Kanes Hill Ward

Cllr Craig
023 8040 4680
tonia.craig@westend-pc.gov.uk

Moorgreen Ward

Cllr Haylett
07557 795 118
julie.haylett@westend-pc.gov.uk

Cllr MacDonald
023 8047 3093
rick.macdonald@westend-pc.gov.uk

Cllr Turl
023 8036 0131
sarah.turl@westend-pc.gov.uk

St James Ward

Cllr Coles
07749 186 870
ben.coles@westend-pc.gov.uk

Cllr Price
023 8076 0945
alex.price@westend-pc.gov.uk

Telegraph Woods Ward

Cllr Weeks
tracy.weeks@westend-pc.gov.uk

A big welcome to our newly appointed Councillor,
Barry Du-Crow

Meeting Schedule

	February	March	April	May
Planning & Highways	Tue 7th	Tue 7th	Tue 4th	Tue 2nd
Full Parish Council	Wed 8th	Wed 8th	Wed 12th	No Meeting
Recreation & Environment	Wed 15th	Wed 15th	Wed 19th	Wed 17th
Policy & Resources	Wed 22th	Wed 22th	Wed 26th	Wed 24th
Annual Parish Assembly (APA)		Wednesday 29th March		
Annual General Meeting (AGM)		Wednesday 10th May		

Useful Contact Details

County Councillors	Borough Councillors
Councillor Broomfield (West End North) Tel: 07876 548 101 Email: steven.broomfield@hants.gov.uk	Councillor Asman (West End South) Tel: 023 8046 5432 Email: janice.asman@eastleigh.gov.uk
Councillor Craig (West End South) Tel: 023 8040 4680 Email: tonia.craig@eastleigh.gov.uk	Councillor Bearder (West End South) Tel: 07789 754 727 Email: tim.bearder@eastleigh.gov.uk
	Councillor Gomer (West End North) Tel: 07568 797 494 Email: richard.gomer@eastleigh.gov.uk
	Councillor Tennent (West End North) Tel: 07703 447 365 Email: bruce.tennent@eastleigh.gov.uk

Parish Office

Parish Clerk Sheridan Mockford
Deputy Parish Clerk Becky Bond
Admin Officer Susie Johnson

Grounds Team

Head Grounds Person Steve Adams
Deputy Head Grounds Person Nigel Thorne
Grounds Team John Clarke, Sam Hotston & Dean Scott

Youth Workers

Youth & Community Leader Nikki Penny
Youth Team Hannah Beattie, Shelley Mockford, Nick Beattie, Jake Penny, Alice Burtenshaw, Tamsin Fitt & Laurie Walker

Hatch Café

Café Manager Jo Janaway
Café Team Liz Payne, Linda Baker, Donna Phillips, June Dymott, Becky Elford & Lauren Davis

Caretakers

David Courtney, Yvonne Brewster, Gill Mansbridge, Shelley Mockford and Simon Bance

Parish Elections



Are you interested in becoming a West End Parish Councillor?

Elections are due to take place in May 2023.

If you would like more information on this, please contact the Parish Clerk at

clerk@westend-pc.gov.uk

Information for Voters

The Government has introduced a new requirement for voters to show photo ID when voting at a polling station. Please make sure you take a suitable form of photo ID with you. If you do not have any of the accepted photo ID, or your ID no longer looks like you, you will need to apply for a [Voter Authority Certificate](#). This is a free photographic identification document specifically for the purposes of voting. You must be registered to vote to use this service.

Community Grant

The Parish Council is once again asking parishioners to choose how they wish to distribute the £3000 it has allocated towards Community Grants. A summary of the applications can be found below.

For more information on the aims & objective's of each organisation, please visit our website.

Please can you complete and return this page with your vote by completing the end column no later than Friday 10th March 2023.

Announcement of the successful grant applications will be made at the Annual Parish Assembly on Wednesday 29th March.

This meeting is open to members of the public. Refreshments will be available from 6:30pm in the Main Hall of the Parish Centre. The meeting will then commence from 7.15pm.

Organisation	Summary of Reasons for Applying	Amount applied for	Amount you would like to see awarded
2nd West End Brownies	Kings Coronation celebrations and a new County flag to mark this occasion.	£300	
Brendoncare	We are seeking funding to support our activity costs of our 3 community clubs for older people in West End, this include our Social club, Kurling and Tai Chi. We will further develop our offering based on the needs and interests of our members.	£300	
Friends of West End Copse	To pay for ongoing maintenance & repairs to the Copse including the boardwalk, paths and boundaries.	£300	
Hatch Grange WI	To purchase an indoor kurling set for use at meetings and social occasions.	£300	
Hilldene Community Association	Outside improvements to Garden and Entrance Area	£300	
New Life Domestic	To assist the cost of holding events for West End Community with proceed going to New Life Domestic.	£300	
Propbox Youth Theatre	We need to purchase a new speaker for rehearsals/performances.	£300	
Speedwatch	Purchase of high visibility clothing and maintenance of existing speed monitoring equipment.	£250	
St James' Church	To grow shrubs in the churchyard to provide foliage and save costs on buying or obtaining supplies further afield, along with saving associated transport costs.	£100	
St James Primary School	To complete a pond restoration project in the Outdoor Learning Area as part of a complete rejuvenation of an outside learning space at the school.	£300	
St James School Association	We would like to hold a Spring disco for all children at St James Primary school – the £280 requested is to pay for the DJ to host the event.	£280	
Wednesday Conservation Volunteers	To purchase PPE about to expire and contribute towards replacement power tools	£300	
West End Garden & Allotment Association	To continue our ongoing maintenance work on our trading hut, which is still showing signs of rust and to tackle roof damage to the clear roofing sheets. To purchase various items to assist customer to the trading hut. To encourage allotment holders and West End gardeners to join the association, to join in with our activities such as social events and to volunteer to assist the committee in providing facilities and events.	£300	
West End Local History Society	To enable the society to continue to offer a full range of speakers at our monthly meetings for member & visitors, provide a quarterly newsletter & maintain our website	£300	
West End Pre School	To purchase scooters and bikes.	£300	

Name:	
Address:	Post Code
Please return to the Parish Office, Chapel Road, West End by Friday 10th March 2023	



News from Saint James Primary School

At Saint James Primary school we pride ourselves on knowing that we are part of a wider community, with links to our Church School and our neighbours in West End. This year we will be concentrating on what it mean not only to be a good neighbour but also a global citizen.

Year 4 started this work by looking for evidence of Victorian neighbours right here in West End.

Where better to look than at an imposing Victorian building, at the heart of the new housing development on Botley Road. However, they discovered that this beautiful building was not necessarily somewhere that they might have liked to live in, despite it's grand appearance, as it was once upon a time the local Union Workhouse.

They learnt that caring for your neighbour in those times meant that anyone who had fallen on hard times could be provided with food and shelter, but they would first have to endure being bathed and deloused as they arrived before being admitted and assigned 'work' - work in the boiler room or on the farm for the men and roles in the kitchen and laundry for the women.

It's role as a caring institution continued from 1948 when it became Moorgreen Hospital and looked after people in different ways.



We are casting our net of understanding even further out into the world and as a school we have registered to become part of the Christian Aid Global Neighbours Award scheme.

This scheme involves encouraging children to have a deeper understanding of global injustice and equip them to know how to tackle this and become courageous advocates for change.

We are already doing a lot of work within school to help everybody understand that it is all our responsibility to do what we can to give everyone and everything a chance to thrive and are very much hoping we can go straight for the Silver level award. Watch this this space!

Also, watch out for our display that will be in the West End Parish Centre during February to tell all our neighbours what they could do as well.

CAN YOU HELP?



After a successful link last year with the Hopeweavers community creating our outdoor sculpture trail, we continue to look at ways we can redevelop our Outdoor Learning Area. This beautiful area of the grounds offers many opportunities for learning.

However, one area is in dire need of restoration and rejuvenation, namely the pond area. It is presently very overgrown, with the fabric of the walkways and surrounding decking in a dangerous state of repair. We are looking into various grants to carry out this work.

However, we are also looking for expertise and when the time comes, volunteers to help carry out the work on this project. Can you help us?

- Do you have expertise around pond building?
- Do you work for or know of organisations that might be interested in funding this work?
- Would you like to be part of the team overseeing this work?

This is a fantastic community project opportunity, and we hope you will want to be involved in some way. Please do contact Mr Jones at j.jones@st-james-westend.hants.sch.uk to express your interest in being added to the team.

What's Happening in the Parish?

Events to look forward to in 2023

- Monday 8th May**
Kings Coronation
- Friday 28th July**
Senior Citizen's Tea Dance
- Wednesday 16th August**
Community Games
- Wednesday 25th October**
Seniors Bingo
- Sunday 12th November**
Remembrance Day
- Friday 24th November**
Turning on the Christmas Lights
- Friday 15th December**
Children's Christmas Party
- Monday 18th December**
Senior Citizen's Christmas Party



A poster for the King's Coronation Picnic in the Park. At the top, there is a string of Union Jack bunting and a gold crown. The title 'King's Coronation Picnic in the Park' is written in a blue serif font. Below the title, the date and time are listed: 'Monday 8th May 2023 1pm - 5pm'. The text invites the community to join the West End Parish Council on Hatch Grange for the King's Coronation. It encourages bringing picnics and blankets. A list of activities includes Kids Races, Bouncy Castles, BBQ run by St James Church, Community Stalls, Ice Cream Van, Raffle, and The Hatch Café selling hot drinks and cakes. A small green circular logo is at the bottom.

Monday 8th May 2023
1pm - 5pm

West End Parish Council invite you to come and join us on Hatch Grange In celebration of the King's Coronation.

Bring your picnic & blanket and join in the fun!

Lots for all the family to enjoy!

- * Kids Races
- * Bouncy Castles
- * BBQ run by St James Church
- * Community Stalls
- * Ice Cream Van
- * Raffle
- * The Hatch Café will be selling hot drinks and cakes

Megan Green Improvements

A new established pathway is being installed at Megan Green thanks to the work of the Grounds team and the Wednesday Volunteer Group.



Hatch Grange Play Area Improvements

Councillors are currently looking into options to upgrade the play equipment in the Hatch Grange play area and also to add a new picnic area. We will keep you updated on the progress.

Youthouse, Moorgreen Road

- A new outdoor water bottle filling station will be put in outside during the February half term.
- A new defibrillator will be installed during the February half term

Sustainability

West End Parish Council understands the importance of sustainability and we are continuously looking at things we can do to become more environmentally friendly.

- We are in the process of replacing all lights at our community buildings with LED's and putting in PIR (motion detection) sensors.
- We have a new card payment provider which uses less paper as the receipts are much more condensed.
- We are looking to improve the efficiency of the existing solar panels.
- The Hatch Café is not using any single use plastic. Also, all of their takeaway packaging is either wooden, recyclable or compostable.

New Website

Our new website will be going live this month.

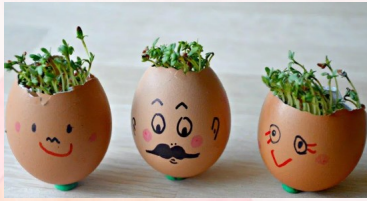


Carnival

We know that everyone has missed the West End Carnival. Unfortunately, the committee that run and organises this have disbanded which has presented challenges in arranging the Carnival.

However, as you can see, we are arranging an event to celebrate our New King's Coronation in May.

Kid's Corner



Cress Heads

What You'll Need:

- A Packet of Cress
- Some Egg Shells
- Cotton Wool
- Some Water
- Pens to decorate

Carefully crack your eggs, so they are as "whole as possible".

Decorate the outside of the egg shells.

Stuff with cotton wool. 2-3 balls per egg should be fine.

Sprinkle your seeds in and add a little water.

Place your cress heads in a sunny place and watch them grow!



Bird Feeder

What You'll Need:

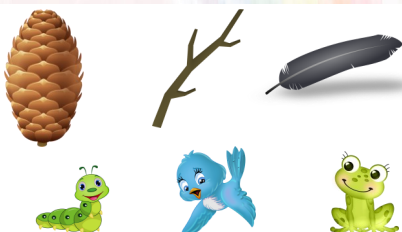
- 1 Large Orange
- 2 Wooden Skewers
- Bird Seed
- String

Cut a large orange in half and scoop out the middle

Poke a skewer through one side of the orange and out through the other, then poke another skewer through from the other side so the two skewers make a cross in the middle. Little birds can perch on these skewers while they eat the seed.

Take two equal lengths of string and tie these onto the skewers on either side so you can hang it up. It might not balance with just one, so be sure to do both.

Fill the orange with bird seed, then hang on a branch for the birds to enjoy.



WORLD BOOK DAY WORDSEARCH

O	N	G	V	L	R	W	I	S	Z	M	R	Z	M	E
F	L	E	A	E	A	I	L	O	W	E	H	H	E	G
D	Q	A	X	Q	E	N	G	P	T	O	A	T	N	R
O	Q	X	F	R	B	N	V	E	C	F	L	F	Y	O
I	S	M	A	F	B	I	P	H	G	S	D	L	E	E
R	B	N	X	R	U	E	A	M	U	J	T	P	I	G
G	M	X	E	M	C	R	A	L	I	C	E	A	L	W
S	P	M	A	G	L	T	G	T	B	P	K	D	I	F
A	L	T	F	O	T	F	Y	L	L	A	W	D	Y	K
E	S	M	T	P	Q	I	Q	J	R	V	W	I	V	J
G	F	T	L	J	H	C	G	L	E	D	V	N	Y	M
N	E	D	U	P	E	M	V	E	C	G	L	G	A	L
L	D	Z	B	M	U	B	B	U	R	A	N	T	C	C
K	M	G	R	E	T	T	O	P	N	I	V	O	G	K
C	A	T	E	R	P	I	L	L	A	R	A	N	F	R

ALICE	BEAR	CATERPILLAR
CHARLOTTE	ELMER	GEORGE
GRUFFALO	PADDINGTON	PETER
POTTER	TIGER	WALLY
WILLOWS	WINNIE	



Our Springtime Scavenger Hunt is back!

See how many of these you can find near you!



Easter Fudge

Ingredients:

- 397g can of Condensed Milk
- 50g Soft Light Brown Sugar
- 125g Unsalted Butter
- 150ml Whole Milk
- 150g Mini Chocolate Eggs

Line a 20cm square brownie tin with baking parchment. Tip all of the ingredients, except the mini chocolate eggs, into a saucepan set over a low heat. Stir gently until all of the sugar has melted. Turn up the heat and simmer for 10-15 minutes, scraping the bottom of the pan regularly until the mixture reaches 115C on a sugar thermometer. If you don't have a sugar thermometer, drop a teaspoon of mixture into a small bowl of cold water - if it's ready, it will form a soft ball that can be easily flattened.

Remove the fudge mixture from the heat and leave to cool for 5 minutes. Use a wooden spoon to beat the mixture for another 5 mins.

Roughly chop 100g of the mini chocolate eggs and tip these into the fudge mixture, then stir until evenly combined. Tip the fudge mixture into the prepared tin, smoothing the surface and pushing it into the corners using a rubber spatula. Scatter over the remaining mini chocolate eggs, then leave at room temperature until completely firm and set. Turn out onto a chopping board and cut into 20 squares before serving.

Can you figure out what these picnic themed words could be?

lentblak	
dacsiwhn	
ecka	
aalds	
urfit	
skrind	
sirchah	
kabset	

Activity Contacts

West End Parish Centre

Monday

Gymtots	9am - 12pm	Sports Hall	023 8045 5007
Diddi Dance	9.30am - 10.30am	Main Hall	07949 458 761
Modern Jive	1.30pm - 2.30pm	Main Hall	07788 525 182
Short Mat Bowls	1.30pm - 4pm	Sports Hall	07821 633 954
Starz Ballet	3.45pm - 4.45pm	Main Hall	0333 123 4140
Julie Cumner Zumba	6.15pm - 8.15pm	Main Hall	01489 781 076

Tuesday

Julie Cumner Zumba	9.45am - 10.45am	Main Hall	07828 978 176
Line Dancing	1pm - 2.30pm	Main Hall	01489 786 387
Dynamo Gymnastics	4pm - 6pm	Sports Hall	023 8045 5007
Spencerettes	6.30pm - 8.30pm	Sports Hall	023 8064 7364
Sarah Wolfe Ballet	7.30pm - 8.30pm	Main Hall	07443 584 941

Wednesday

Baby Sensory	9am - 3.30pm	Main Hall	07791 614 533
Ladies Badminton	10.30am - 12pm	Sports Hall	023 8047 7966
Brendoncare Tai Chi	1.15pm - 2.45pm	Sports Hall	01962 857 099
Short Mat Bowls	6.30pm - 8.30pm	Sports Hall	07821 633 954

Thursday

Over 50's Keep Fit	9.45am - 10.45am	Main Hall	01489 781 076
Julie Cumner Fitness	10am - 11am	Sports Hall	07828 978 176
Short Mat Bowls	1.15pm - 4.15pm	Sports Hall	07572 403 246
Diane Wren Zumba	6.30pm - 8.30pm	Main Hall	07572 403 246
West End Dogs	7pm - 10pm	Sports Hall	01489 328 413

Friday

Gymtots	9am - 12pm	Sports Hall	023 8045 5007
Moo Music	9.15am - 12.30pm	Main Hall	07956 460 760
Veterans Badminton	2pm - 3pm	Sports Hall	07901 758 413
Gymtots	4pm - 5.30pm	Sports Hall	023 8045 5007
Martial Arts	4pm - 7.15pm	Main Hall	07877 647 415

Saturday

Starz Ballet	9am - 1pm	Main Hall	0333 123 4140
Gymtots	9am - 12pm	Sports Hall	023 8045 5007

Sunday

Life Church	9am - 12.30pm	Main Hall	023 8067 6599
-------------	---------------	-----------	---------------

Firestation

Uke Group	Thu — 1pm - 2pm	07473 450 720
Kalimba	Fri — 10.45am - 11.45am	07473 450 720
Museum	Sat — 10pm - 4pm	023 8047 1886

Youthouse

Little Gems Pre School	Mon - Fri — 8am - 3pm	023 8055 1926
	Tue 6.30pm - 8.00pm	
Youth Club	Wed 6.30pm - 8.00pm	07725 724 619
	Thu 6.30pm - 8.30pm	

Some activities are seasonal. Please use the contact details provided to confirm what dates activities will be held on.

** Visit www.girlguiding.org.uk to find your nearest group

Hildene Community Centre

Monday

Yoga	AM	07790 397 710
Table Tennis	AM	07783 052 800
Sara's Body Tone	PM	02380 477 045
Brendoncare	PM	07467 955 865
Brownies	PM	kewilliams@btinternet.com

Tuesday

Slimming World	PM	07833 746 532
Jiujiutsu	PM	07990 824 995

Wednesday

Adult Tap Dance	AM	07790 397 710
Wilemena Crafts	AM	07428 786 914
Music Bugs	AM	0844 822 1157
Armchair Dogs	PM	02380 465 429
Hatch Grange WI	PM	02380 470 571
Dance Out Loud Ballet	PM	07745 987 689
Prop Box Youth Theatre	PM	07789 882 005

Thursday

Mencap Flagship Art Group	AM	richard.peck@ebrmencap.org.uk
Sara's Body Tone	PM	02380 477 045
Pilates	PM	07772 641 842
Senior Citizen's Table Tennis	PM	02380 444 251

Friday

Dance Out Loud Ballet	AM	07745 987 689
Prop Box Youth Theatre	PM	07789 882 005
WI Craft Group	PM	02380 470 571

Saturday

Prop Box Youth Theatre	AM	07789 882 005
------------------------	----	---------------

Sunday

Weight Watchers	AM	07809 646 008
-----------------	----	---------------

Townhill Farm Community Centre

Monday

5 th West End Rainbows	5.30pm - 6.30pm	Main Hall	**
Kate Wilkinson Aerobics	7.30pm - 8.30pm	Coffee Lounge	023 8039 8075

Tuesday

Tots Group	10am - 12pm	Coffee Lounge	07725 724 619
Matt Fiddes Martial Arts	4pm - 5.15pm	Main Hall	07877 647 415
Ladies Kickboxing	7.15pm - 8.15pm	Main Hall	07877 647 415

Wednesday

Shine Performing Arts	4.15pm - 6.15pm	Main Hall	07887 731 155
Sharon Newman Yoga	7pm - 8.15pm	Main Hall	07901 927 892

Thursday

Tots Group	10am - 12pm	Coffee Lounge	07725 724 619
------------	-------------	---------------	---------------

Friday

3 rd West End Guides	7pm - 8.30pm	Main Hall	**
---------------------------------	--------------	-----------	----

Sunday

Cornerstone Ministries	9am - 1pm	Main Hall	
Coppini Martial Arts	7pm - 8pm	Main Hall	023 8043 8256

Parish Facilities for Hire

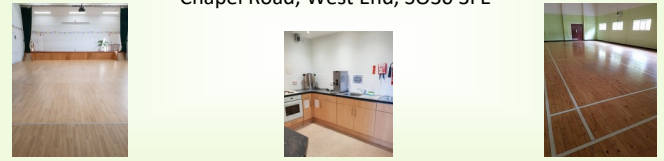
Townhill Farm Community Centre

Wessex Road, West End, SO18 3RA



West End Parish Centre

Chapel Road, West End, SO30 3FE



YoutHouse, Moorgreen Road

Moorgreen Road, West End, SO30 3EG



The Old Firestation

Orchards Way, West End, SO30 3FB



Hilldene Community Centre

68 High Street, West End, SO30 3DU



Hire Prices up to 31st March 2023

Weekday Hire Monday - Friday Cost Per Hour

Party & Event Hire Evenings & Weekends Cost Per Hour

Hire Prices from 1st April 2023

Weekday Hire Monday - Friday Cost Per Hour

Party & Event Hire Evenings & Weekends Cost Per Hour

Parish Centre Main Hall including Kitchen	£17.50
Parish Centre Sports Hall	£16.50

£29.50
£27.50

Parish Centre Main Hall including Kitchen	£19.00
Parish Centre Sports Hall	£18.00

£19.00
£18.00

£32.00
£30.00

Townhill Main Hall	£15.50
Townhill Coffee Lounge	£12.50
Hall + Coffee Lounge	£25.00

£29.50
£22.50
£41.00

Townhill Main Hall	£17.00
Townhill Coffee Lounge	£14.00
Hall + Coffee Lounge	£28.00

£17.00
£14.00
£28.00

£32.00
£25.00
£45.00

Fire Station	£14.00
--------------	--------

N/A

Fire Station	£15.00
--------------	--------

£15.00

N/A

Youth Club	N/A
------------	-----

£29.50

Youth Club	N/A
------------	-----

N/A

£32.00

Refundable Deposit	£25 Children's Parties
	£75 No Alcohol
	£100 with Alcohol

Refundable Deposit	£25 Children's Parties
	£75 No Alcohol
	£100 with Alcohol

Cancellation Charges	28 days or more prior to the event - Full Refund
	27-8 days prior to the event - 50% Refund
	7 days or less prior to the event - No Refund

Cancellation Charges	28 days or more prior to the event - Full Refund
	27-8 days prior to the event - 50% Refund
	7 days or less prior to the event - No Refund

We Clean Ovens

...so you don't have to!

Call us today to have your cooking appliances sparkling, using our own eco friendly products.



- Range & Aga Specialists
- Ovens & Hobs
- Extractor Hoods
- Microwave Ovens
- Traditional Stoves



Call TODAY for LOCAL Service **023 8218 0318**
oven_u.co.uk/oven_cleaning/eastleigh

Townhill Farm Community Centre

Wessex Road, West End, Southampton, SO18 3RA

We have a wonderful community building that is currently available to book for regular groups and hirers Monday - Friday between 8.30am-4.00pm.

We also have limited storage space available to use at an additional cost.

If you wish to enquire about hiring this space, please contact the Parish Office.

023 8042 3671 or enquiries@westend-pc.gov.uk

To view or book West End Parish Centre, Townhill Farm Community Centre, The Old Firestation or the YoutHouse, please contact the Parish Office on 023 8046 2371. Further details and Terms & Conditions are available at www.westend-pc.gov.uk
 For Hilldene bookings, please contact Tel: 07566 203859 Or visit www.hilldenecentre.org.uk

Community Services, Organisations & Groups

PRE SCHOOLS & NURSERIES

Little Gems Pre School
Moorgreen Youth Facility,
West End
Tel: 023 8047 1070

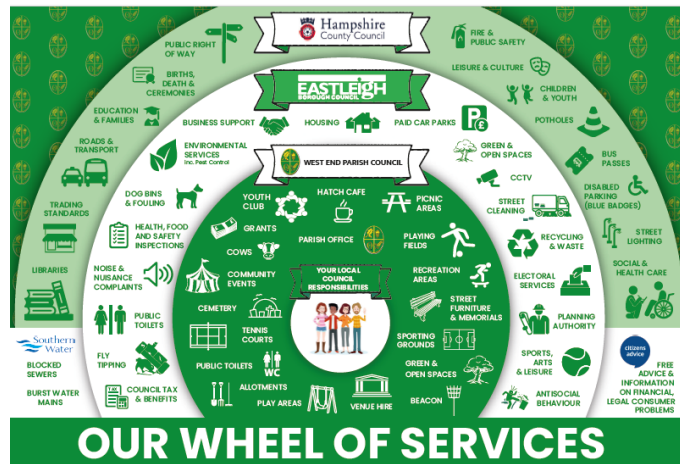
Little Owls Woodland Pre School
Itchen Valley Country Park,
Allington Lane, West End
Tel: 07774 336 750

Paint Pots Pre School
26 Quob Lane, West End
Tel: 023 8047 6942

Play Away Day Nurseries
1-5 Chapel Road, West End
Tel: 023 8046 6563

Seedlings Montessori Nursery
Moorlands Primary School,
Kesteven Way, Southampton
Tel: 023 8046 2555

West End Pre School
Hilldene Centre, West End
Tel: 023 8046 6764
www.westendpre-school.co.uk



Hampshire County Council	Eastleigh Borough Council	West End Parish Council
01962 841 841	023 8068 8000	023 8046 2371

SCOUTS & GIRLGUIDING

Scouts
www.scouts.org.uk
10th Itchen North Scouts
Daniel Wiseman
daniel@gillingsplanning.co.uk

23rd Itchen North Scouts
Darren Munday
dmunday82@gmail.com

28th Itchen North Scouts
Simon Cotmore
cjotm@hotmail.co.uk

Chimera Explorer Scouts
Ken Clarke
chimeraesu@gmail.com

Girlguiding
www.girlguiding.org.uk

2nd West End Brownies
Judith Barton
judithbarton@btinternet.com

SCHOOLS

Moorlands Primary School
Kesteven Way, Southampton
Tel: 023 8046 4404

St James' C of E School
Monarch Way, West End
Tel: 023 8090 0995

Townhill Infant & Junior School
Benhams Road, Southampton
Infants - Tel: 023 8047 4835
Juniors - Tel: 023 8047 3611

SECONDARY SCHOOLS

Deer Park Secondary School
Woodhouse Lane, Botley
Tel: 01489 783 473

The Gregg School
Cutbush Lane, West End
Tel: 023 8047 2133

The Kings' School
Allington Lane, Fair Oak
Tel: 023 8060 0986

Wildern School
Wildern Lane, Hedge End
Tel: 01489 783 473

Woodlands Community School
Minstead Avenue, Harefield
Tel: 023 8046 3303

Wyvern College
Fair Oak Road, Eastleigh
Tel: 023 8069 2679

DROP-IN CLINICS AND HOSPITALS

Moorgreen Hospital
Botley Road, West End
Tel: 023 8047 5200

Princess Anne Hospital (Maternity)
Coxford Road, Southampton
Tel: 023 8077 7222

Royal South Hants Hospital
Graham Road, Southampton
Tel: 023 8063 4288

Southampton General Hospital
Tremona Road, Southampton
Tel: 023 8077 7222

DOCTORS

Chartwell Green Surgery
Townhill Way, West End
Tel: 023 8047 2232

West End Surgery
Moorgreen Road, West End
Tel: 023 8047 2126

DENTISTS

Inspired Dentistry
1 Cerne Close, West End
Tel: 023 8032 8888

Quality & Caring Dentistry
Botley Road, West End
Tel: 023 8046 5391

Dental Health Private Dental Health Clinic
38, 40 High Street West End
Tel: 023 8047 3612

CHURCHES

Anchor Community Church
26 Quob Lane, West End
Tel: 07729 750 545
Sunday Service: 10:15-12:00

Life Church West End
Parish Centre – Bob Hall
Tel: 07727 244 674
Sunday Service 10:15

River of Life Church Holiday Inn, Botley Road, West End
Tel: 07480 396 056
Sunday Service: 10:00-13:00
www.therolchurch.com

St Brigids' Church (RC)
Tel 023 8044 9088
Sunday Service: 17:30

St James' Church (C of E)
Tel: 07762 673 350
Sunday Services: 09:30, 11:00 & 18:30
www.stjameswestend.org.uk

West End Methodist Church
Tel: 01489 783 708
Sunday Service 11:00

BUSES

Blue Star Bus
Tel: 01202 338 421

Dial-a-Ride
Tel: 023 8090 2450

First Hampshire Bus
Tel: 0870 010 6022

Xelabus
Tel: 023 8064 4715

LIBRARY

West End Library
Parish Centre, Chapel Road,
West End
Tel: 0300 555 1387

COMMUNITY GROUPS

Friends of West End Copse
Tel: 023 8046 6442
terrybuck41@yahoo.co.uk

Hatch Grange WI
Tel: 023 8047 0571

One Community
Tel: 023 8090 2400

West End Community Support Forum
Tel: 07557 795 118

West End Garden & Allotment Association
Tel: 01489 789 505

West End Local History Society
Tel: 023 8047 1886

West End Seniors Table Tennis Club
Tel: 023 8044 4251

West End Writers
Diane Sparkes
Tel: 023 8046 3334

Local Business Directory

Blossoms Painting & Interiors

Your local, friendly female painter!
Interior Painting, Vinyl Kitchen wrapping,
Furniture Renovation, DIY Weddings and more.
Highly recommended, reliable and trustworthy service.

Tel: 07745 594022
Email: blossoms.painting@gmail.com

diddi dance

Join Andrea for our preschool dance and movement classes.
Monday 9.30am-10.15am and 10.30am-11.15am
At West End Parish Centre

Email: andrea.mccrea@diddidance.com
Facebook: @diddidancesouthampton
Website: www.diddidance.com/diddi-dance-southampton/

Edition Homes & Properties Limited

Dilapidation Works, Commercial & Domestic Refurbishments
Moorgreen Road, West End, SO30 3EG

Tel: 023 8047 0437
Email: office@editionhomes.co.uk
Website: www.editionhomesandproperties.co.uk

Jon Curtis Tree Surgery

Trees, hedges & garden clearance

Tel: 023 8047 0047
Email: jon.curtis@tree-surgeon.biz
Website: www.tree-surgeon.biz

Julie Cumner Fitness Timetable

Join us for a fun and friendly workout.
West End Parish Centre, Chapel Road, West End

Monday - 6.30pm - Mash Up
Monday - 7.30pm - Fitness Pilates
Tuesday - 10.00am - Zumba
Thursday - 10.00am - Tone Up Thursday

Tel: 07828 978176
Email: julie.zumbaft@gmail.com

Over 50's Keep Fit Class

A low impact, part exercise, part dance, fun and friendly keep fit class. Thursday mornings
(please contact Tanya for current class times)

Tel: 07818 060639
Email: tanya.dominey@btinternet.com

R Hudson Plumbing and Heating

Gas safe registered engineer providing boiler servicing, repairs & installation. All plumbing work also undertaken

Tel: 07854 745 949
Email: ryan.p.hudson@gmail.com

Shine Performing Arts

Learn how to act for stage & screen & join the SPA AGENCY for professional work in the industry. FREE TRIALS available

Wednesday 4.30pm-6.30pm—Ages 5 to 17
Townhill Farm Community Centre, Wessex Road, SO18 3RA

Tel: 07887 731155
Web: www.shineperformingarts.net
Email: june@shineperformingarts.net

Advertise With Us

If you wish to place an advertisement in our next newsletter, please find a list below of our advertising rates.

Directory Listing 4 edition	£10.00
Eighth Page Advert One Edition	£5.00
Quarter Page Advert One Edition	£5.00

For all enquires, please email us at:
enquiries@westend-pc.gov.uk



We are a highly skilled and established team at West End, with combined knowledge of the property industry in excess of 163 years. Fronted by the Branch Manager David Parry, our success has been built on a passion for providing a first class, professional service and we are always delighted to see so many clients returning to us to sell their properties. The office has also become the home of our Property Auction Centre. Whether you are looking to buy, sell, let or rent, please get in touch.



ESTABLISHED 1900

Call 023 8047 7377 or email westend@pearsons.com

SERVICE | MARKETING | EXPERIENCE

pearsons.com